

Incident Command System

Logistics Section

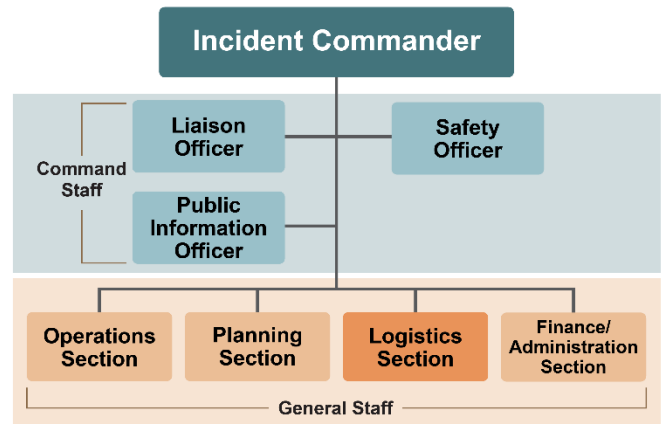


During an animal disease emergency, the Incident Command System (ICS) is utilized to coordinate personnel, tasks, and agencies, ensuring an efficient response. This Just-in-Time handout provides an overview of the roles and responsibilities of personnel within the Logistics Section of ICS.

What is the ICS Logistics Section?

The Logistics Section is a segment of the ICS General Staff.

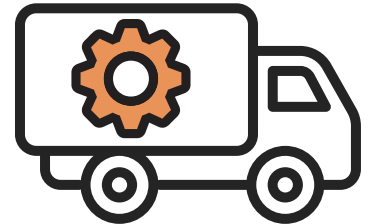
- Personnel assigned to this section will be responsible for support, resources, and services needed to meet the incident objectives.
- This may include facilities, transportation, communications, equipment maintenance and fueling, food services, medical services, and ordering and distributing resources and supplies.



Roles and Responsibilities

Logistics Section Supervision

- The Logistics Section is managed and supervised by the **Logistics Section Chief (LSC)**, who reports to the Incident Commander.
- Responsibilities of the LSC include:
 - Obtain and maintain essential personnel, equipment, and supplies,
 - Provide communication planning and resources,
 - Set up food services and incident facilities
 - Provide transportation
 - Provide medical services to incident personnel
 - Attend operational planning meetings to contribute to the development of the Incident Action Plan

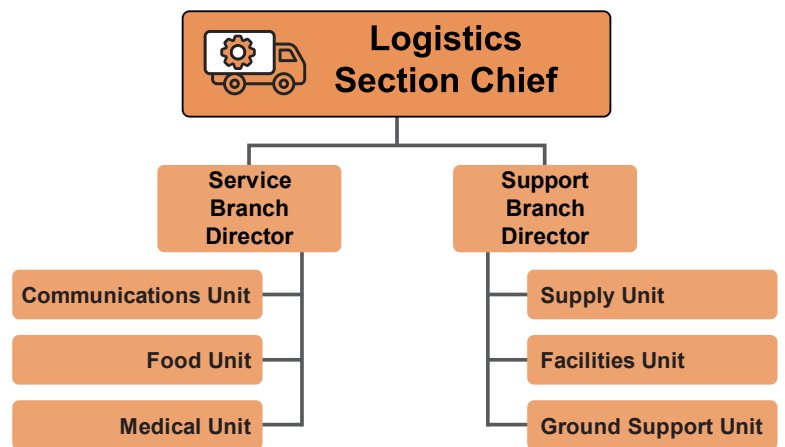


Logistics Section Personnel Structure and Responsibilities

- The Logistics Section can be divided into two distinct Branches, each consisting of three Units. These divisions may be needed for very large incidents or those requiring large amounts of equipment or facilities.
 - Each Logistics Branch is led by a Director, who reports to the Logistics Section Chief.
 - Units are led by Unit Leaders who report to the Branch Director.
 - All Units may not be required; they are established based on need.
 - If a Unit is not staffed, the LSC is responsible for those functions and activities.

➤ The **Service Branch** manages all service activities at the incident, including food, communications, and medical support. The Service Branch Director supervises three Logistics Units:

- The **Communication Unit** develops communication plans for all ICS segments, including installing, testing, distributing, and maintaining communications equipment.
- The **Food Unit** supplies the food needs for the entire incident. This includes determining the number of personnel to be fed, developing plans to order and transport food to all incident areas.
- The **Medical Unit** provides medical services for incident personnel, develops an Incident Medical Plan, and assists the Finance/Administration Section with processing injury-related claims.



- The **Support Branch** manages all support activities at the incident, including facilities, resource ordering, and ground support. The Support Branch Director supervises three Logistics Units:
- The **Supply Unit** orders, receives, processes, stores, and distributes all incident-related resources and supplies, such as personnel, personal protective equipment, and disinfection products.
 - The **Facilities Unit** sets up, maintains, and demobilizes incident support facilities, except Staging Areas. This includes the Incident Command Post, the incident Base, Camps, and other facilities for feeding, sleeping, and sanitation. This Unit also provides security services as needed.
 - The **Ground Support Unit** is primarily responsible for the maintenance, service, and fueling of all mobile equipment and vehicles. This Unit is also responsible for ground transportation of personnel, supplies, and equipment, as well as developing the Incident Traffic Plan.

How Animal Industry Stakeholders Can Help

Animal industry stakeholders can provide important support to the Logistics Section. Examples include:

- Supplying, or identifying sources for, equipment, supplies, facilities, or specialized expertise for depopulation, disposal, or cleaning and disinfection tasks.
- Providing technical information about husbandry and production systems, movement patterns, supply chains, and animal handling and transport.

Key Points

- Personnel within the Logistics Section provide support, resources, and services for the response.
- Animal industry stakeholders can provide support with real-time information, resources, and supplies.
- Depending on the size and scale of a response, the Logistics Section may consist of two Branches with three Units each. Understand your assigned role and who your supervisor is.



Additional [Just-In-Time training resources](#) can be found on the [CFSPH website](#).

Developed through funding from the USDA National Animal Health Preparedness and Response Program and the Michigan Department of Agriculture and Rural Development.