

Traffic Control and Movement

During Animal Health Emergencies



During animal disease emergencies traffic control and movement procedures may be necessary to monitor, screen and guide animal transport vehicles.

Traffic Control Function

- Inform driver of incident and subsequent travel direction
- Identify vehicles with infected, exposed, or susceptible animals
- Restrict entry into disease areas

Components of Traffic Control Zones

- **Advance Warning Area**
 - Tells traffic what to expect ahead
- **Transition Area**
 - Moves traffic out of its normal path
- **Activity Area**
 - Where work takes place
- **Termination Area**
 - Where traffic resumes its normal flow
- **See diagram on next page**

Traffic Control Set-Up

- **Setup**
 - Controlled access
 - Access corridor
 - Screening checkpoint
 - Stop movement
 - No access
 - Unmanned
 - Manned
- **Equipment and Supplies**
 - Road supplies
 - Traffic cones and barricades
 - Signage to inform drivers
 - Reflective vests
 - Lighting
 - Maps (to determine detour routes)
 - Animal supplies
 - Pens or shelter; handling equipment
 - Shade, fans, or water spray
 - General supplies
 - Tables, chairs; shelter
 - Communication devices
 - Water

➤ Personnel

- Animal health
 - To provide animal health knowledge
 - Veterinarians/technicians, extension
- Law enforcement
 - To control vehicle traffic and enforce laws
 - State, County or local Police, military personnel, conservation officers
- Cleaning and disinfection
 - To assist with decontamination procedures
 - Fire departments, HazMat Teams
- Support
 - To set up screening procedures, animal assistance
 - Road crews, public works

➤ Communication

- Between checkpoint and Incident Command
 - Two-way radios, cell phones, computers

Biosecurity

- Same standards used for the response situation
- To prevent the spread of disease agents
- To assist in the eradication of disease agents

Animal Welfare

➤ Weather can have a dramatic impact

- Have equipment to warm or cool animals in vehicle checkpoint line
- Keep vehicles moving in a timely manner

Additional Resources

- Graham JL, Hutton J, Cao S, Fagel M, Wright W. 2008. National Cooperative Highway Research Program (NCHRP) Report 525, Volume 13: A guide to traffic control on rural roads in an agricultural emergency. http://www.nap.edu/catalog.php?record_id=14184
- Emergency Agriculture Movement Control Checkpoint Selection Guidance. Multi-State Partnership for Security in Agriculture. <http://www.nasda.org/File.aspx?id=4076>
- Traffic Control – Agricultural Response Monograph No. 001. Nebraska Department of Agriculture http://www.nda.nebraska.gov/homeland_security/monograph_001.pdf

Figure 6C-1. Component Parts of a Temporary Traffic Control Zone

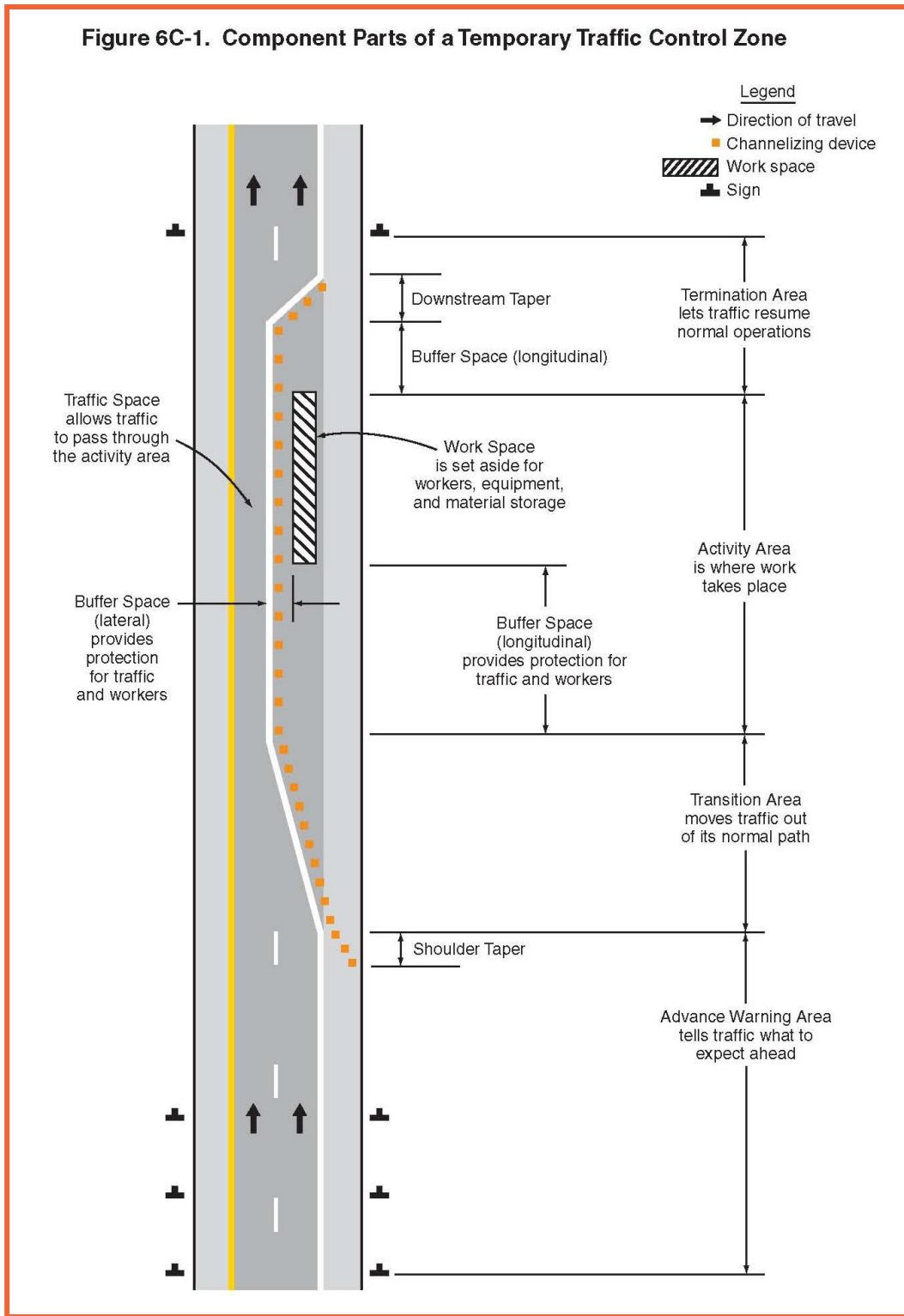


Photo from Manual on Uniform Traffic Control Devices, 2012 edition; Part 6: Temporary Traffic Control. At http://mutcd.fhwa.dot.gov/pdfs/2009r1r2/pdf_index.htm

Development of this educational material was by the Center for Food Security and Public Health at Iowa State University through funding from the Multi-State Partnership for Security in Agriculture MOU-2014-HSEMD-002. December 2013.

